



A Portrait of Winchester

Summary Report

21st September 2021

Portrait of Winchester: an outline roadmap

Prepared by William Adeney, Dr Savithri Bartlett and Dr Tammi Sinha
for Winchester City Council

Summary Report

21st September 2021

Executive Summary

In June 2019 Winchester City Council declared a climate emergency and in its Council Plan 2020-25 recognised that “*the climate crisis is the biggest challenge all of us face in the coming years and decades. Winchester must play its part in tackling the crisis and hand our district to our children and grandchildren in a better state than it is now.*”

In November 2020 Winchester City Council invited Wessex Green Hub to co-host two public online workshops to co-create a future Portrait of Winchester. The objective of these workshops was to collectively imagine a beautiful vision of a future Winchester in 2040 and for the participants to identify initiatives which could translate this vision into specific, tangible yet transformative actions.

Following on from these workshops, Winchester City Council invited Wessex Green Hub to develop a concept for a roadmap as a guide for how we get from where we are now to where we imagine we want to be in 2040.

This report sets out the approach developed by Wessex Green Hub to create this roadmap, based around Kate Raworth’s Doughnut Economics model. It can be used by Winchester City Council to connect its own policies, initiatives and activities together with those of the local community, business and other organisations to map and understand how these actions together create a pathway to this sustainable and regenerative future for Winchester District.

It looks at how Doughnut Economics has been down-sized from a global scale to the level of a single city or region - ‘the city selfie’ - and how in a number of cities around the world local people are coming together to create doughnuts for their city and surrounding region to show how the city can thrive and provide for the local population across a range of social foundations whilst remaining within sustainable planetary boundaries, and how the dimensions of these social foundations and planetary boundaries can be selected and quantified.

The report sets out a four stage approach to establishing a roadmap and demonstrates how this can be applied through two specific lenses of transport and business. It concludes by setting out a series of key findings and recommendations for how Winchester City Council can develop and implement this forward looking approach and what the specific next steps could be, demonstrating the opportunity for all parts of the community to work together to make Winchester a thriving City & District in which every single person thrives.

Contents

- **Introduction**
- A Portrait of Winchester
- Doughnut Economics
- Review of selected Strategies & Plans
- Applying the Doughnut
- Findings, Recommendations & Next Steps

Introduction

This report presents a concept for a coherent Roadmap for Winchester City Council to move from the present situation to a sustainable and regenerative future that allows all of Winchester District to thrive.

Winchester City Council in its Council Plan 2020-25 recognises that “*the climate crisis is the biggest challenge all of us face in the coming years and decades. Winchester must play its part in tackling the crisis and hand our district to our children and grandchildren in a better state than it is now.*”

The Roadmap approach set out in this document can be used by Winchester City Council to draw together its own policies, initiatives and activities together with those of the local community, business and other organisations to map and understand how these actions together create a pathway to this sustainable and regenerative future for Winchester District.

This document outlines the next steps in the Portrait of Winchester process to create this coherent Roadmap towards the future Vision for Winchester, created in two workshops facilitated by the Sustainability Team at Winchester City Council and Wessex Green Hub in November and December 2020, and subsequently with Council members and senior officers in June 2021, applying the principles of flourishing communities, both locally and globally.

The approach set out in this document builds on Kate Raworth’s Doughnut Economics model to structure a Roadmap embedded in place – linking climate action and social justice – right here in the culture and fabric of Winchester civic life. This approach provides Winchester City Council with guidance on how to develop a clear, practical Roadmap to reach carbon neutrality by 2030 and enact the Vision for 2040.

The approach purposefully enables the integration of existing strategies and plans, including Winchester City Council’s Carbon Neutrality Action Plan and the work of Winchester Action on Climate Change.

The approach set out in this proposal will encourage milestones, targets and initiatives to be set, reviewed and shared with the community, for example through quarterly ‘doughnut visualisations’ on Winchester City Council’s website.

In order to succeed, the transition from now to a sustainable, regenerative future needs to be owned and enacted by all in the community, business and all stakeholders, not only Winchester City Council.

Overview

This report shares some concepts and ideas for Winchester City Council to consider that would support the alignment of its policies, strategies and plans with the long term needs of Winchester District and with the substantial and significant changes that need to be made to address the climate emergency that was declared by Winchester City Council in 2019.

It brings together existing and recognised approaches and methodologies, enhances them, and makes them specific to and relevant for Winchester.

It also proposes a set of recommendations and next steps as to how Winchester City Council can bring the concept of the City Doughnut to the centre of its policy setting and strategic development to align its thinking and its action across not just the Council but the whole of Winchester District and provide guidance to and alignment with other local stakeholders and neighbouring and overlapping authorities



Contents

- Introduction
- **A Portrait of Winchester**
- Doughnut Economics
- Review of selected Strategies & Plans
- Applying the Doughnut
- Findings, Recommendations & Next Steps

An overview of the Portrait of Winchester

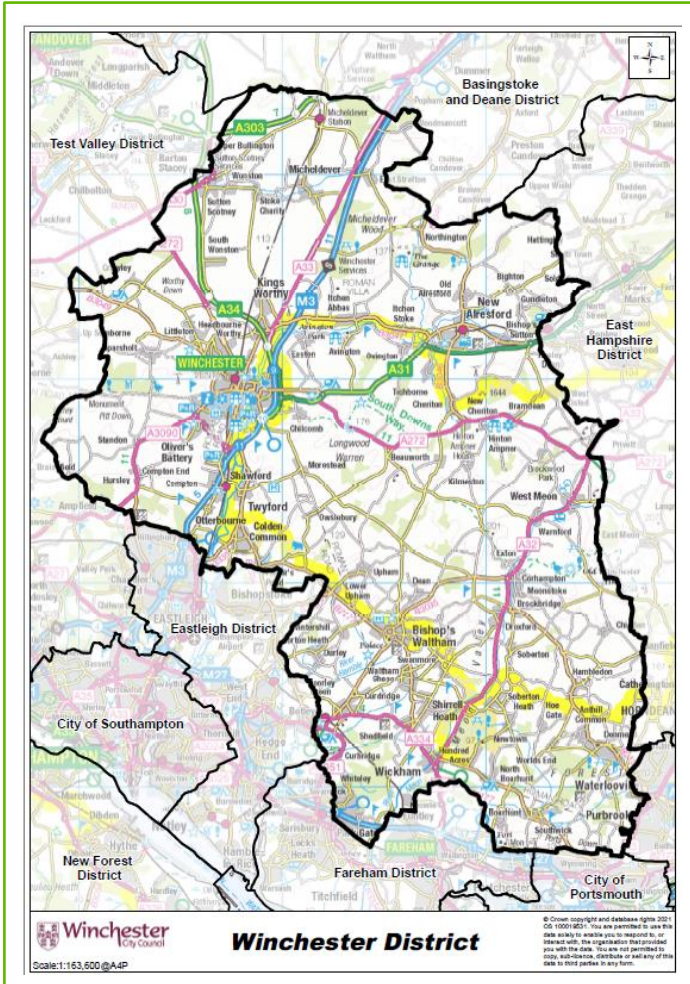
The Portrait of Winchester process has been a collaboration between Winchester City Council and Wessex Green Hub which started in November 2020. The purpose of the Portrait of Winchester has been and is to work with businesses, charities, organisations, and members of the public to develop a shared vision for a sustainable, decarbonised future Winchester. The development of a positive future vision of Winchester is of prime importance to Winchester City Council as is demonstrated by, amongst other activities, the Carbon Neutrality Action Plan, Winchester Town Forum's Vision 2030, and the Green Economic Development Strategy.

However, the Portrait of Winchester process has followed a different approach from these other visions and plans. The Portrait of Winchester is rooted in the belief that in order to solve the challenges of the climate emergency, we need to cultivate our ability to collectively reimagine most aspects of how our society works (following the work of Transition Network and Rob Hopkins). The Portrait of Winchester vision was formulated with this in mind and encouraged participants to use creative thinking and the power of imagination to step into the future and envision how a sustainable/net zero Winchester might look/feel/smell/sound/taste.

The purpose of the Portrait of Winchester process is to encourage and then translate these radical ideas for the future into specific, tangible yet transformative actions. In order to achieve the 2030 net zero target for Winchester District, we will all need find ways of being and working which push the boundaries and to implement exciting yet challenging policies. What became apparent through this process is the need for current/future action to extend beyond just reducing carbon emissions and meeting the 2030 carbon neutrality target – there is a need to develop policies and initiatives which instil a sense of place, community, and belonging, and create an embodied experience of sustainable living within Winchester District.

This study builds on the Portrait of Winchester process to set out an approach to creating a Roadmap to a future thriving Winchester and provides a route to build a sustainable/net-zero future Winchester District. It uses well known and relevant models such as Doughnut Economics and the Theory of Change to set out clear steps to how we can collectively imagine, design and manifest this more sustainable future and allows for the integration of many of the strategies and initiatives which Winchester City Council has developed over the last few years.

How can Winchester be a home to thriving people in a thriving place, while respecting the wellbeing of all people and the health of the whole planet?



Creating a Thriving Portrait of Winchester District

Through an exploration of this question, and what it provokes, we can discover what it would mean to thrive within the Doughnut - the safe and the just space for humanity - given Winchester's location, context, culture and global impact. The result is the City Portrait.

The Thriving City Portrait can be used to:

- envision what it means to be a thriving city, combining social goals with ecological ones, and local aspirations with global responsibility
- connect a network of city actors, with diverse interests and concerns, through a common framework
- explore the city from a holistic perspective, inviting city actors to see interconnections, recognise tensions, and identify synergies for action
- inspire city-wide initiatives and co-creation through an iterative process of transformative innovation
- develop metrics fit for a 21st century city, that start to measure and reflect what it means for Winchester to thrive.

Map: copyright Ordnance Survey

Source: DEAL (2020a), DEAL (2020b)

The Portrait of Winchester process engaged local people and decision makers through a series of online workshops and drop in sessions in 2020 and 2021

Public workshop 1 (November 2020)

The first workshop started with the creation of a shared vision of a future Winchester District in 2040 using a Visioning Exercise led by Dr Deborah Benham of Transition Network. This was followed by breakout sessions, organised by sector, to identify actions that could be taken by 2030 to achieve this future vision. The sectors, which had been determined by WCC prior to the workshop were: Education, Buildings, Transport, Embodied Carbon, Business, Circular Economy, Energy, Industrial Processes, Fashion and Agriculture.

Public workshop 2 (December 2020)

The second workshop focused on determining actions, initiatives and policies that are needed from WCC as well as residents, businesses and other organisations, to get to a sustainable future Winchester District across six priority sectors: education, transport, energy, agriculture, circular economy and embodied carbon. The ADKAR® change management model was used to guide this process and around 80 action and policy recommendations were recorded during the workshops.

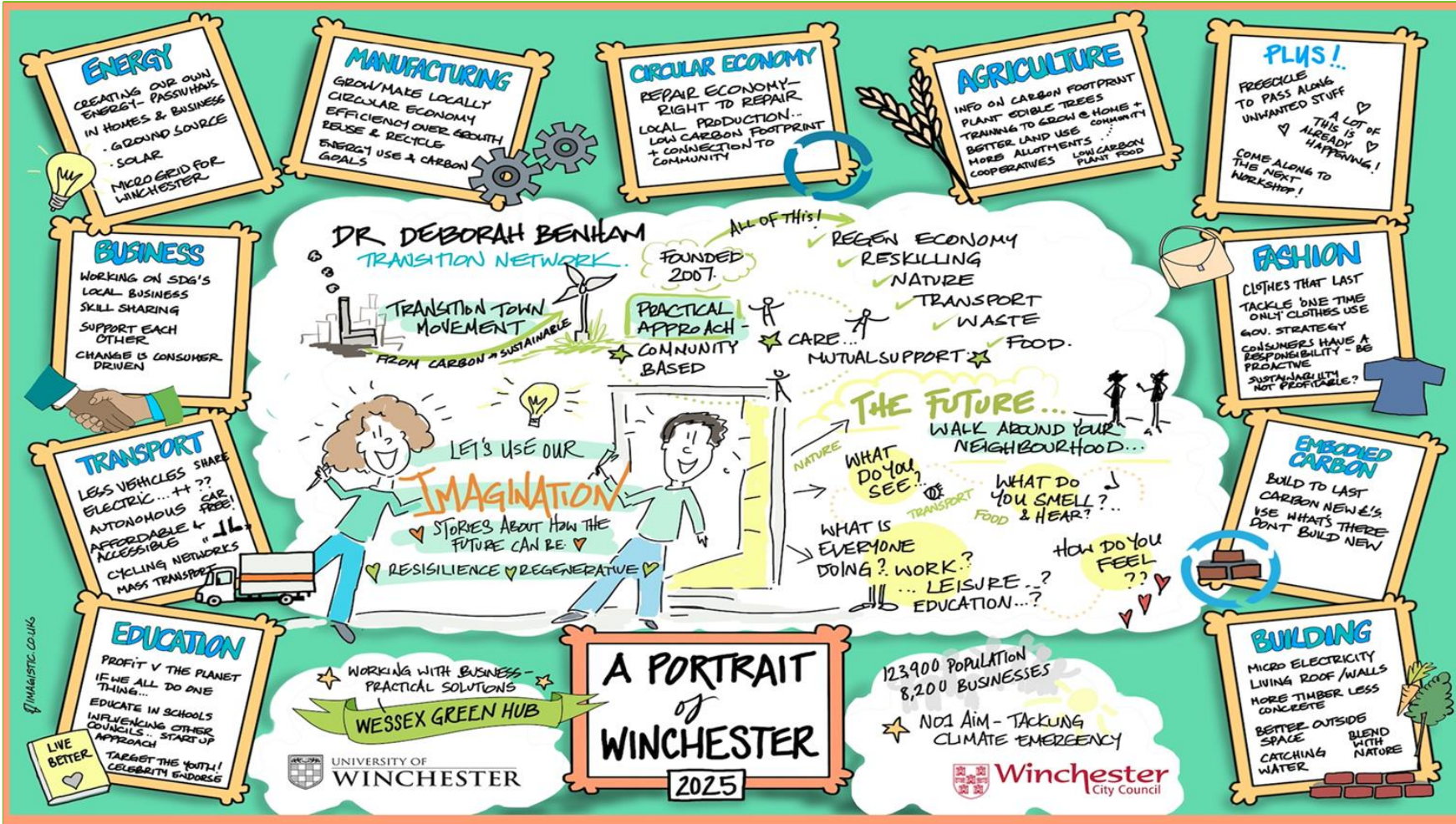
WCC members & officers workshop (June 2021)

The third workshop was coordinated by Wessex Green Hub and led by Rob Hopkins, founder of the Transition Town movement and provided an opportunity to imagine a flourishing future Winchester District. Rob took the elected members and officers who participated on a trip in his Time Machine to a very different future than the one that currently appears to be on offer. He encouraged everyone to be more imaginative, more playful, more capable and to do the kind of big thinking that the Climate Emergency demands.

Imagine Winchester drop-ins (September 2021)

As part of the nationwide Great Big Green Week celebration of action on climate change, two drop in sessions were held in Winchester to encourage local people and visitors to imagine their vision of a thriving District, and to share, discuss, draw and build these visions together. As well as a physical drop-in the Imagine Winchester initiative will continue to provide a platform for sharing ideas and connecting people to work together to manifest these ideas. The Imagine Winchester platform can be accessed at <http://www.facebook.com/groups/imaginewinchester>

At the first Portrait of Winchester workshop in November 2020 a more regenerative future for the District was imagined across ten sectors

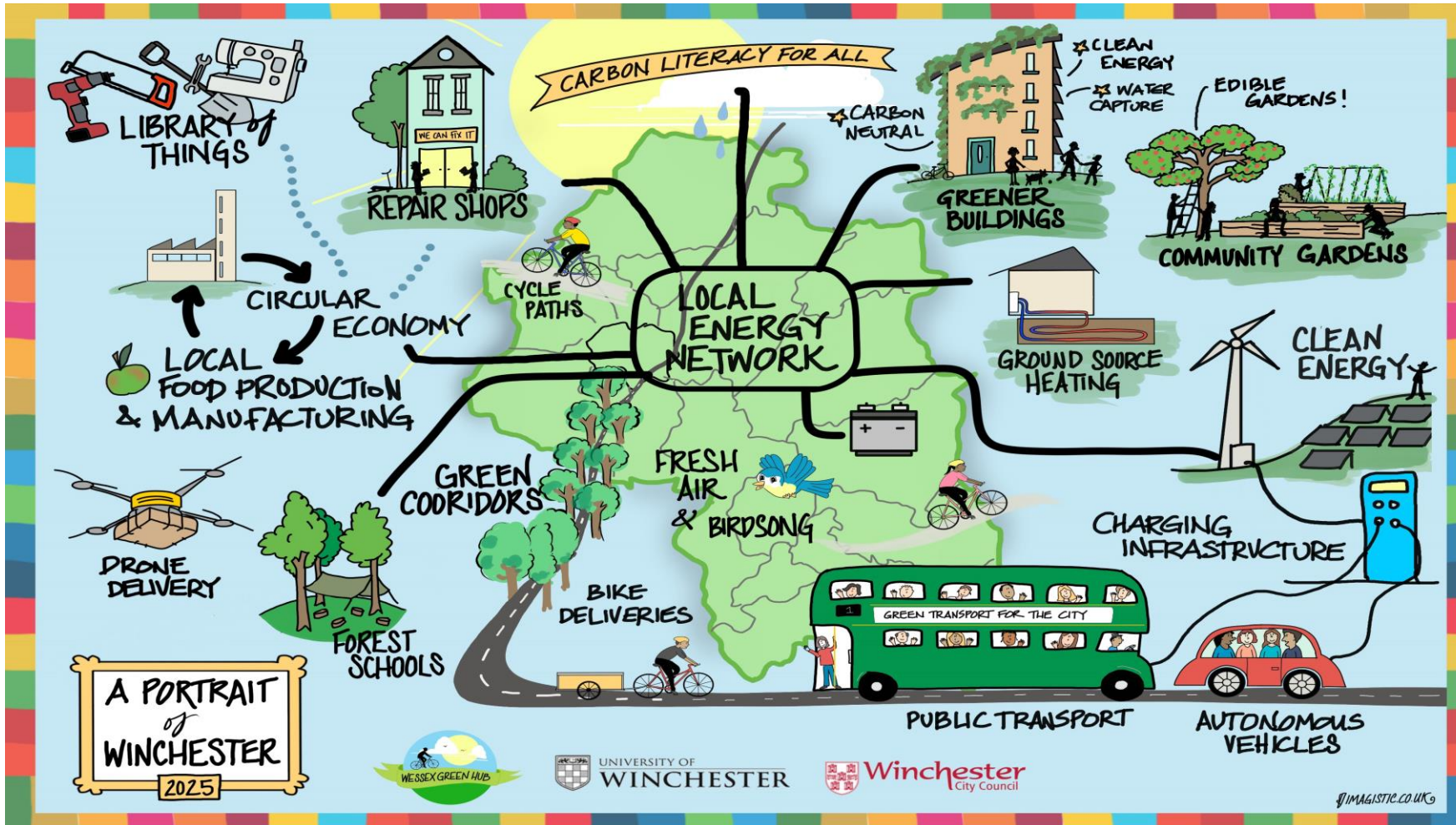


Portrait of Winchester workshop 1 (November 2020)

- Online workshop with an open invitation and around 60 local residents and stakeholders attending.
- Visioning exercise to create a first shared vision of a future Winchester District in 2040.
- Sector specific breakout sessions: Education, Buildings, Transport, Embodied Carbon, Business, Circular Economy, Energy, Industrial Processes, Fashion and Agriculture.
- Analysis of discussions to determine which sectors and subject were included in workshop 2.

Source: Emma Paxton for WCC

The second Portrait of Winchester workshop was held in December 2020 and focused on identifying specific actions and initiatives

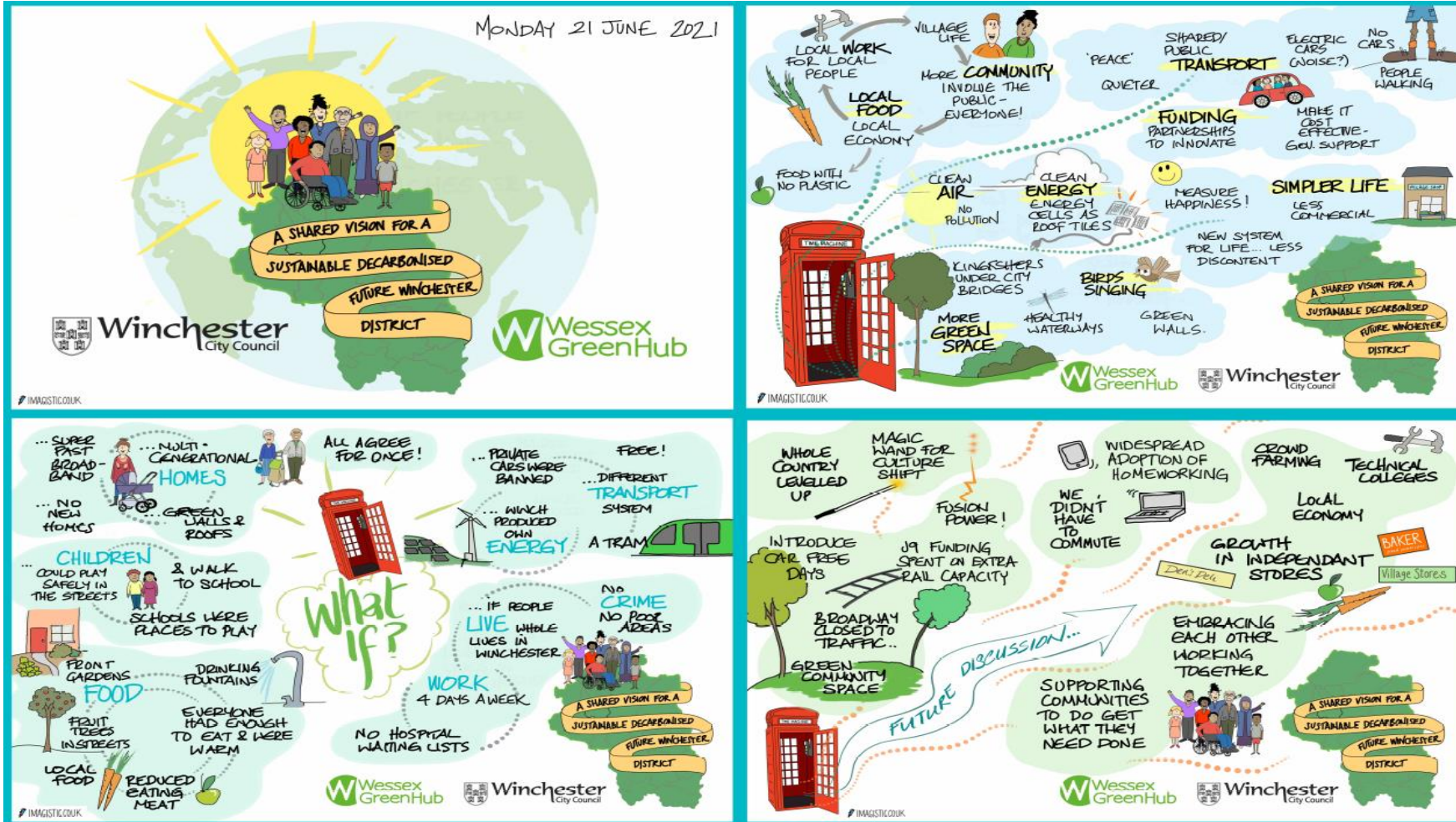


Portrait of Winchester workshop 2 (December 2020)

- Six priority sectors: education, transport, energy, agriculture, circular economy and embodied carbon.
- Focus on determining actions, initiatives and policies that are needed from WCC as well as residents, businesses and other organisations, to get to a sustainable future Winchester District.
- Identified around 80 action and policy recommendations during the workshops.
- Created a visual Portrait of Winchester summarising many of the key ideas that emerged from the workshop discussions.

Source: Emma Paxton for WCC

The third workshop was held in June 2021 for the elected members and officers of Winchester City Council



Portrait of Winchester workshop 3 (June 2021)

- Coordinated by Wessex Green Hub and led by Rob Hopkins, founder of the Transition Town movement.
- Provided an opportunity to imagine a flourishing future Winchester District, thriving in place for people and planet.
- Rob invited the participants to be more imaginative, more playful, more capable and to do the kind of big thinking that the Climate Emergency, which WCC has declared, demands.
- The response was very engaged and positive from all participants.

Source: Emma Paxton for WCC

As we move from 'What is' through 'What if' to 'What next' we will be continuing to develop an online and physical space to 'Imagine Winchester'



Imagine Winchester

The next step is to create a forum of connection and practice - both online and in person - to share ideas and exchange information and develop initiatives - bringing together some of the ideas of the Amsterdam Donut Coalitie and the Bologna Civic Imagination Office.

Imagine Winchester provides a forum for individuals, organisations and businesses to come together, to connect and to identify opportunities, actions and dreams for the local area.

This is an initiative to inspire local people and motivate businesses and organisations to improve their sustainability, to tackle the climate emergency and improve social justice through regenerative and sustainable work and community practices. It will bring together passionate, caring people from all parts of the community as well as local organisations to imagine and create a kinder, fairer, more connected local society.

Imagine Winchester is available to everyone in the local area, across all races, ages, genders and socio-economic conditions.

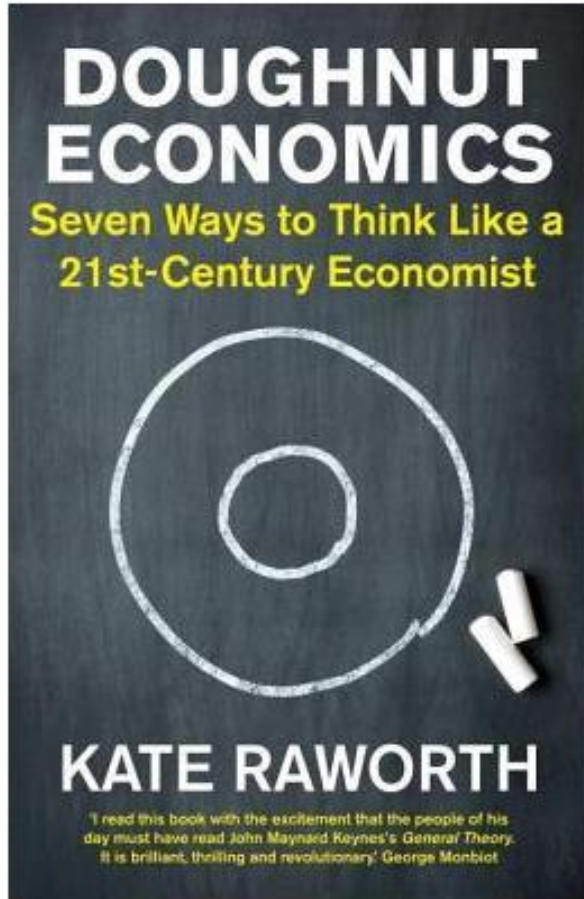
<https://www.facebook.com/groups/imaginewinchester>

Credits: (1) Bologna Civic Imagination Office; (2) Rob Hopkins; (3) Institute of Imagination <https://ioi.london/>
(4) Design by: www.alistephens.co.uk , volunteer designer of Transition Kentish Town

Contents

- Introduction
- A Portrait of Winchester
- **Doughnut Economics**
- Review of selected Strategies & Plans
- Applying the Doughnut
- Findings, Recommendations & Next Steps

To get from where we are now to the thriving future Winchester District that has been imagined we are encouraging the adoption of Doughnut Economics

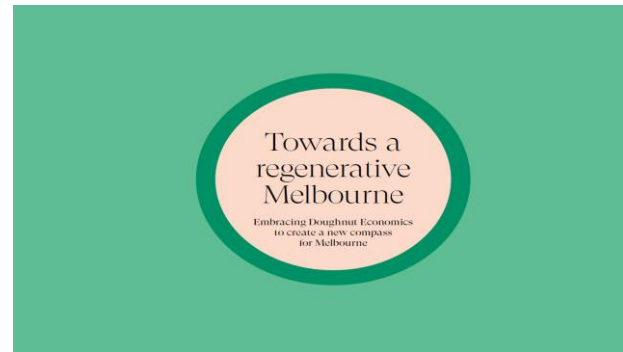
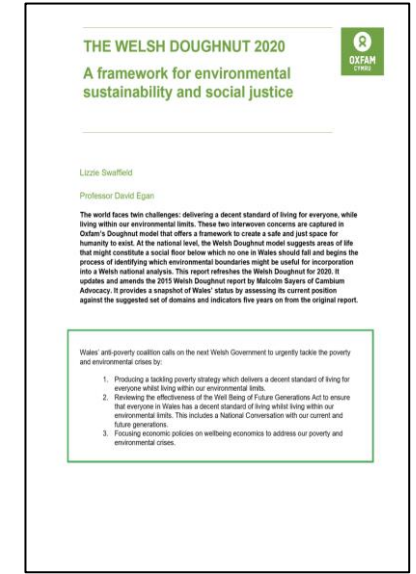
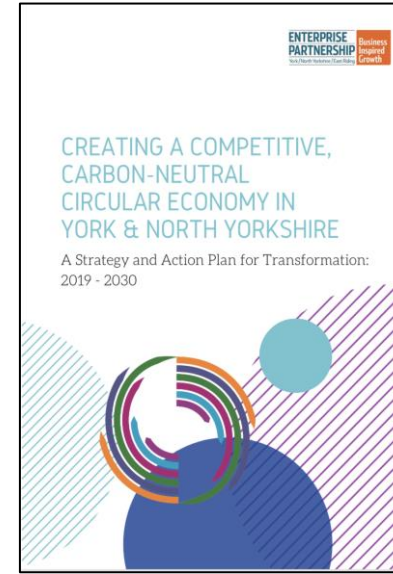
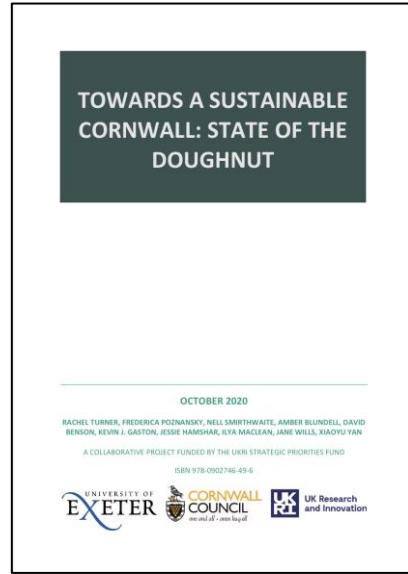


Source: Raworth, K. (2017a)

What is Doughnut Economics?

- The Doughnut is an economic mindset which is fit for the context and challenges of the 21st century and is a way of thinking that brings about regenerative change.
- The starting point for the Doughnut is to change the goal from endless GDP growth to thriving within the Doughnut.
- Developed by Kate Raworth and initially published as part of her Oxfam report in 2012, the concept of Doughnut Economics has rapidly developed attention within cities around the world.
- Doughnut Economics offers a vision or pathway into what it means for humanity to be able to thrive in the 21st century by exploring the mindset and ways of thinking necessary in order to achieve its targets. It is a way of meeting the needs of all people within the means of the living planet.
- The ideas of Doughnut Economics are currently being put into practice in regions and cities in the UK and across the world including Cambridge, Cornwall, Wales, Melbourne, Brussels and Amsterdam.
- Further information at <https://doughnuteconomics.org/about-doughnut-economics>

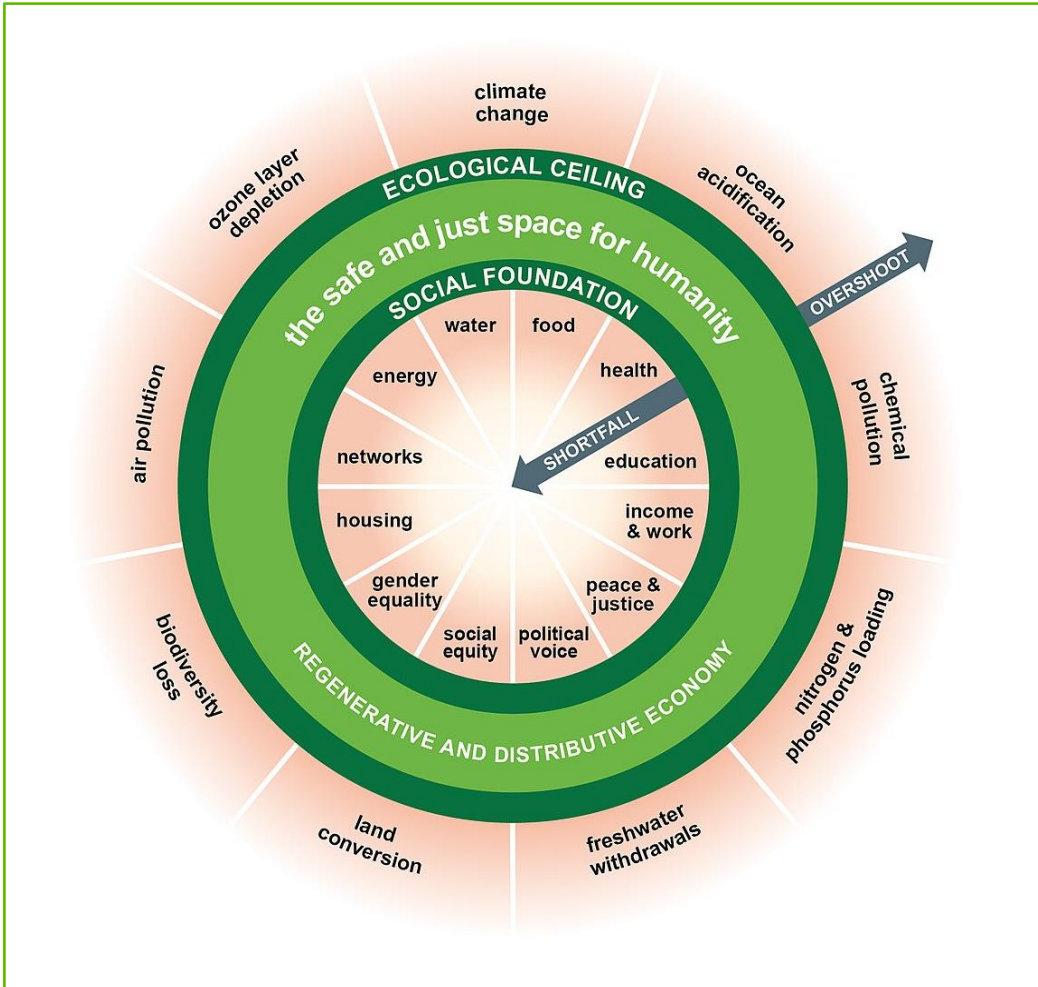
A Doughnut approach now being used to be used in a number of regions and cities in the UK and around the world, including Cambridge, Cornwall, Wales, Melbourne, Berlin and Amsterdam, and this study draws on these experiences



Source: TCI (2020); University of Exeter (2020); Oxfam Cymru (2020); DEAL (2020a); Regen Melbourne (2021).



The Doughnut is defined as the ecologically safe and socially just space which meets the needs of all people and in which humanity can thrive



Source: DEAL (2020b)

What is the Doughnut?

The Doughnut can be thought of as a compass for human prosperity in the 21st century, whose goal is to meet the needs of all people within the means of the planet. It consists of two concentric rings:

- A **social foundation** – below which lies critical human deprivation, to ensure that no one is left falling short on life's essentials
- An **ecological ceiling** – beyond which lies critical planetary degradation, to ensure humanity does not collectively overshoot planetary boundaries.

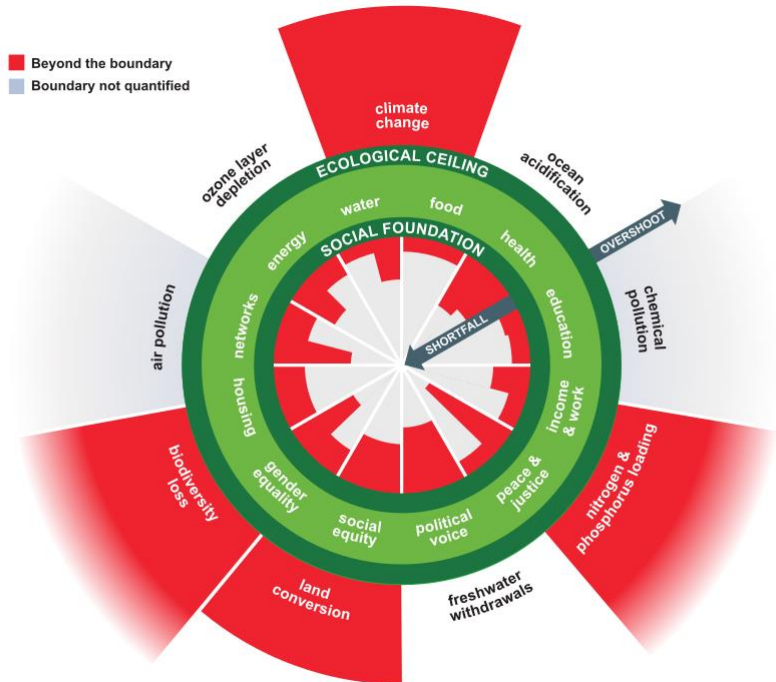
Between these two boundaries lies a doughnut-shaped space that is both ecologically safe and socially just – a space in which humanity can thrive.

These two boundaries are foundational in the sense that humanity should always seek to avoid critical human deprivation and critical planetary degradation. But how best to define their specific dimensions and measure their current status relative to desired outcomes will keep evolving over time.

How do we move from our current situation with ecological overshoots and social shortfalls in so many dimensions to a regenerative and just place?

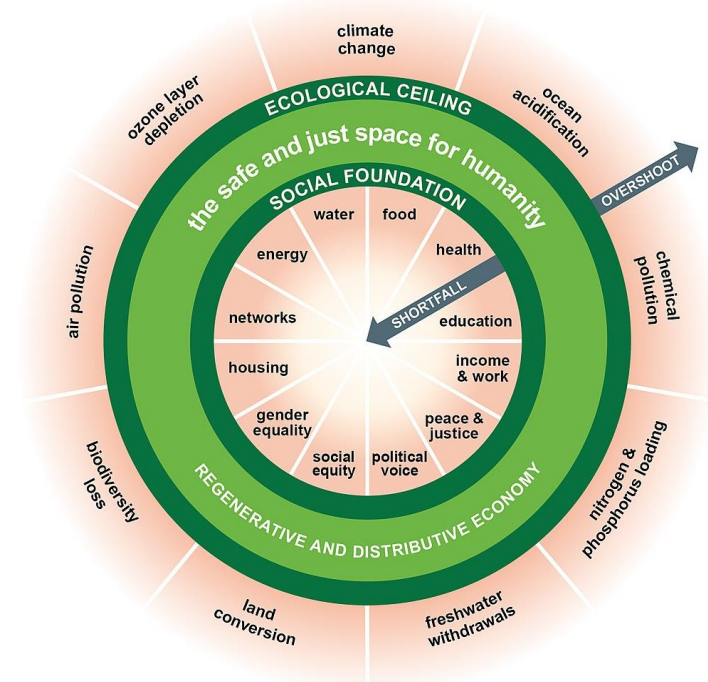
2021: Example of current situation

Currently at both a global and a local scale we are overshooting our planetary boundaries and falling below the social foundations needed for human wellbeing, and this is not sustainable.



2040: Possible regenerative future for Winchester

By 2040 could a flourishing Winchester District be thriving and healthy with sufficient social foundations and within planetary boundaries, both locally and globally?



Source: DEAL (2020b), Raworth, K. (2017b)

The local portrait or vision can then be turned into transformative action by developing a roadmap with clear steps as has been done in other regions

For example, the **Creating City Portraits Methodological Guide** developed by the Thriving Cities Initiative sets out nine steps to generate action for those who want to develop and implement an effective Doughnut approach in their region or city:

1. Mirror

Reflect on the current state of the city through the portrait's holistic perspective

2. Mission

Create a compelling vision of what it means to become a thriving city

3. Mobilise

Bring together the city changemakers and stakeholders needed to bring about change

4. Map

Identify existing initiatives, policies and strategies that are already taking the city in this direction

5. Mindset

Embrace the values, ways of working and new narratives that underpin the deeper shifts required

6. Methods

Draw on complementary tools that serve to expand the city portrait's analysis and deepen its insights

7. Momentum

Create an interactive process that drives cycles and transformative policy and action

8. Monitor

Assess progress against leading indicators that enrich the City Portrait

9. Mmm

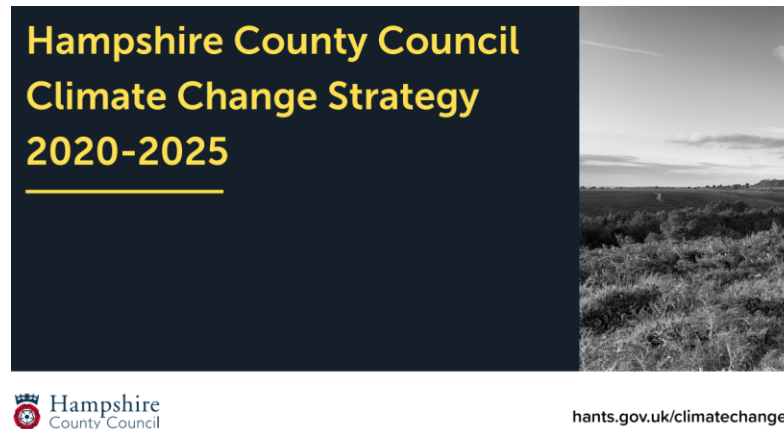
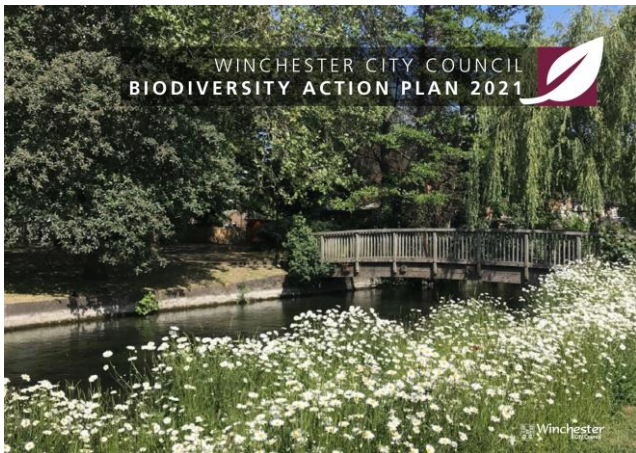
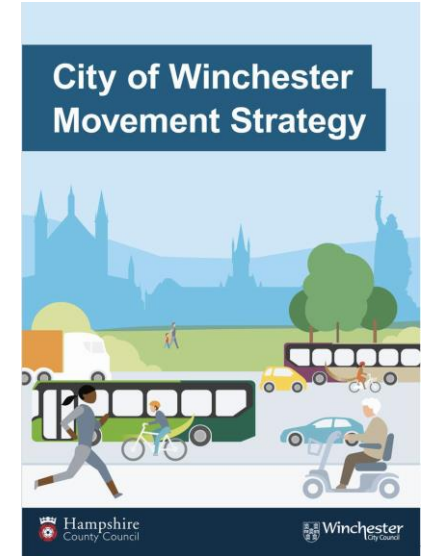
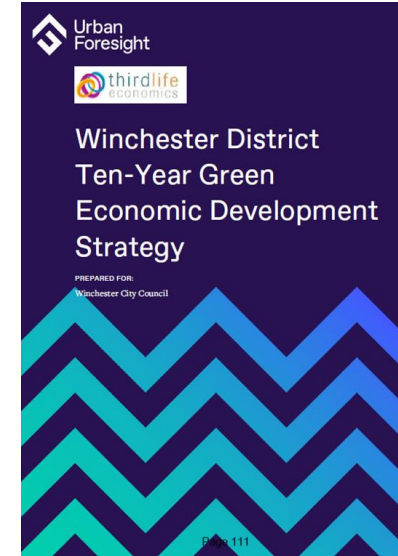
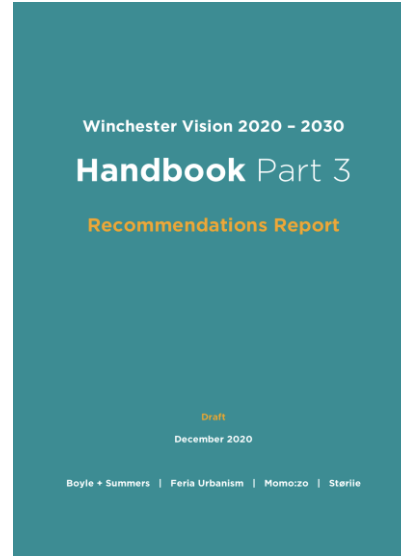
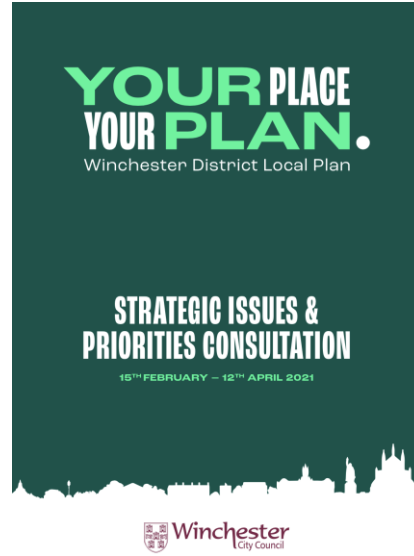
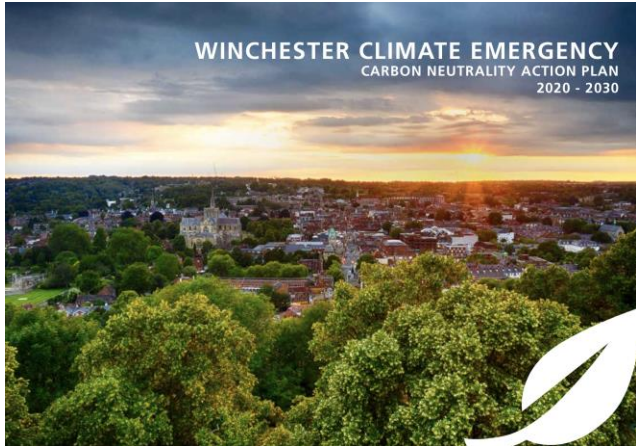
Make it irresistible: be creative, have fun, share learning and stories of success, and celebrate

Source: DEAL (2020a), TCI (2020)

Contents

- Introduction
- A Portrait of Winchester
- Doughnut Economics
- **Review of selected Strategies & Plans**
- Applying the Doughnut
- Findings, Recommendations & Next Steps

A number of key strategies and plans were reviewed in order to understand what they include and how they connect with one another



Source: A list of all the documents relating to Winchester that were reviewed for this study is included at the end of this report.

The Ten-Year Green Economic Development Strategy was not included in the review due to the timing of publication.

This report has identified a number of key areas of focus from the review of key strategies and plans

Summary and conclusions from review of key strategies and plans

The themes running through the strategies, plans and initiatives to mitigate and adapt to climate change include a focus on a number of key areas:

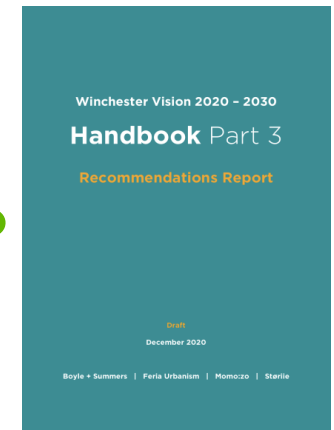
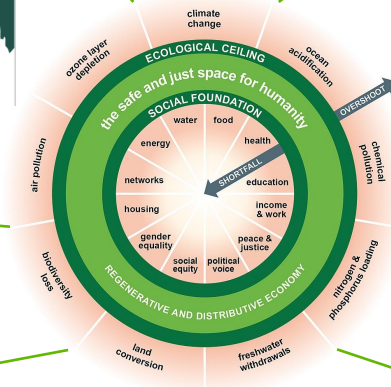
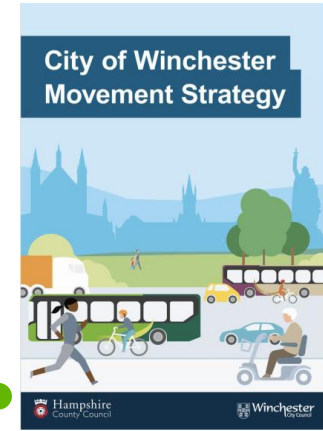
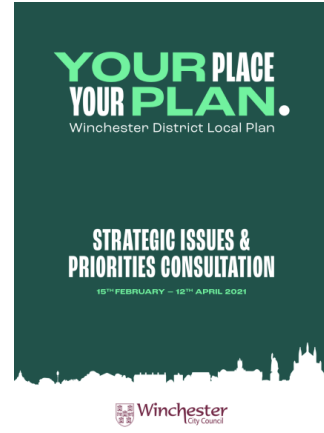
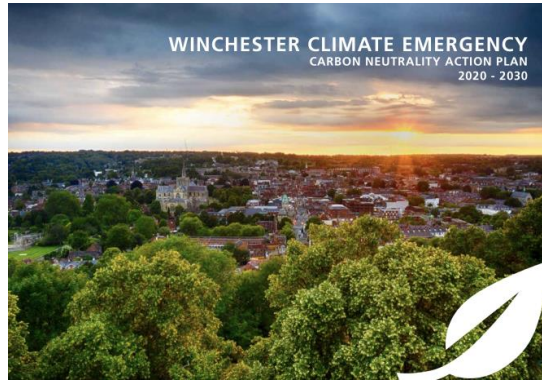
- **Organisational emissions** – aiming to become exemplars for the community in order to share good practice from a strong position
- **Community and community led projects**
- **Energy** – reducing reliance on high emission energy generation, capacity and generation
- **Rewilding** – greening of city spaces and protecting bio diversity through habitats managed by the councils
- **Innovation** – funding and supporting a move to the circular economy, developing eco systems for business
- **Transport** – decrease the reliance on the car, invest in public transport, enable electrification, cycling and walking strategies
- **Residential / built environment** – upgrading current residential stocks for energy efficiency
- **Waste and the circular economy** – reduce waste going to landfill through programmes of waste prevention, efficiencies, materials in use
- **Business** – promoting a move to regenerative business through design thinking, innovation, collaboration and co-operatives.

The key strategies and plans provide opportunities, hope and challenges to achieve net zero. Partnerships and working groups have been initiated and are continuing to work.

Contents

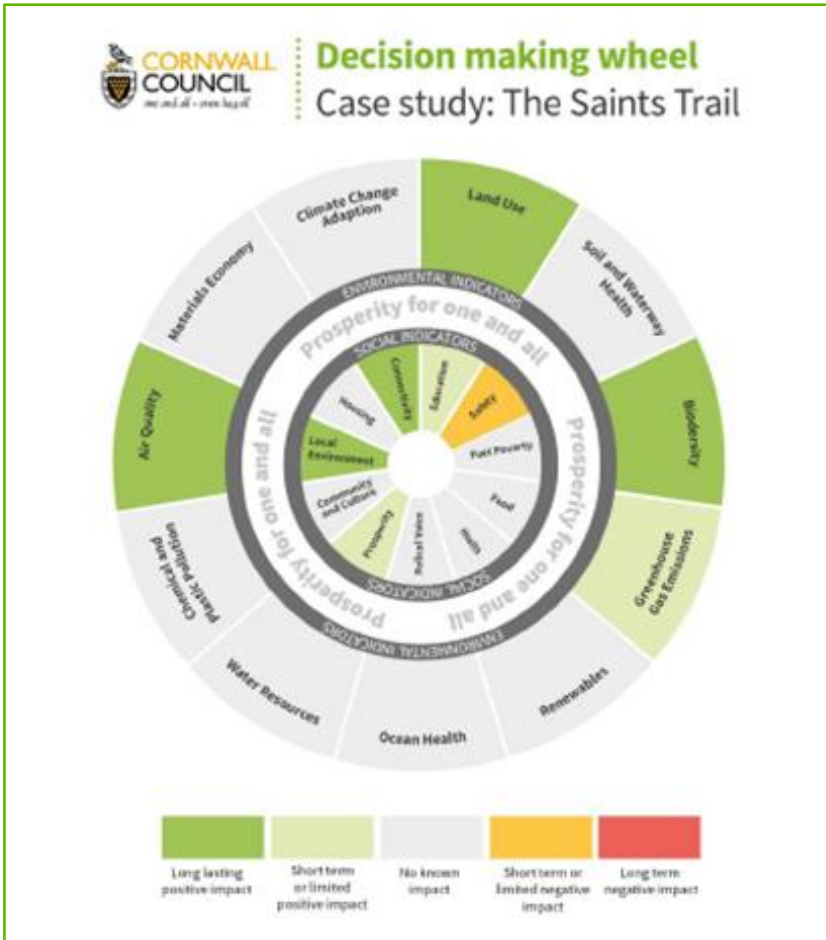
- Introduction
- A Portrait of Winchester
- Doughnut Economics
- Review of selected Strategies & Plans
- **Applying the Doughnut**
- Findings, Recommendations & Next Steps

The Doughnut has the potential to offer a holistic framework which connects and aligns existing and future strategies and plans for Winchester District



Source: A list of all the documents relating to Winchester that were reviewed for this study is included at the end of this report.

The Doughnut approach can be used both as a holistic framework for local decision making and to balance the multiple ecological and social impacts and benefits of a specific initiative or project



Cornwall Council Decision Wheel

The Doughnut can be used to support local decision making on specific projects and initiatives as well as supporting policies and strategies.

Since September 2019 Cornwall Council has used a Decision Wheel based on the Doughnut to guide cabinet decisions and to ensure that all decision-making relating to climate change mitigation is balanced with the principles of social justice. The Decision Wheel is used by Cornwall Council to illustrate the positive and negative impacts of each initiative being proposed in an easily accessible form.

The impact of an initiative on each dimension of the Decision Wheel is considered in turn and then assigned an impact level together with a narrative directing decision makers to any specific points that project leads wish to emphasise.

Cornwall Council has found that as well as supporting decision making, use of the Decision Wheel is embedding a new way of thinking and acting into the Council and increasing both members' and officers' understanding of the social, economic and environmental impact of the Council's work and the trade-offs between these dimensions.

Such an approach could be applied to decision making around new housing developments or energy and transport projects around Winchester District or other key Council decisions.

Further information can be found at <https://www.local.gov.uk/case-studies/cornwall-council-doughnut-economics>

Source: Cornwall Council (2021); Local Government Association (2021)

A simple process has been designed to create a roadmap to an imagined future vision of Winchester using a set of aligned initiatives in four steps

Step 1 – A Future Vision for Winchester

A roadmap needs a destination which acts as the ‘north star’ towards which all policies and strategies are aligned.

For the purpose of the Doughnut work this is provided by the Future Vision of Winchester. This is not a fixed future vision and will emerge and change over time, influenced and guided by all relevant stakeholders.

The first version of this Future Vision has been dreamed and created through the ‘Visioning’ and ‘What If’ sessions within the three Portrait of Winchester workshops, the first two of which were open to all and the third one was run for the elected members and senior officers of WCC.

Step 2 – Mapping the Doughnut

The Future Vision is mapped to the doughnut in the Doughnut Economics model with its 12 social foundations and nine planetary boundaries to create a picture of 2040. Initially this might be with either no or limited overshoots to produce an ideal future scenario.

An equivalent doughnut map for the present (2021) can be created to show where current overshoots exist.

Appropriate indicators are identified for each of the doughnut dimensions, which can then be measured either using a graded heatmap or specific quantified parameters.

The difference between the present state and the future vision can then be measured.

Step 3 – A Pathway back to the present

The third step in creating the roadmap is to work backwards from the Vision of Winchester 2040 in steps to understand what pre-conditions will have been needed at each stage to have reached that stage (following the Theory of Change).

This will create a connected, robust Pathway from the future Vision to the present. At each step of the sequence WCC will be able to outline clear indicators, thresholds and assumptions.

A ‘way-point’ can also be created for 2030 to align with the current end point of WCC’s Carbon Neutrality Action Plan (and other way-points can be created too).

Step 4 – Creating a detailed Roadmap

The final step is to map the existing initiatives from key policies strategies, plans and analyses from WCC and (where appropriate) from other relevant local organisations onto the Pathway created in Step 3.

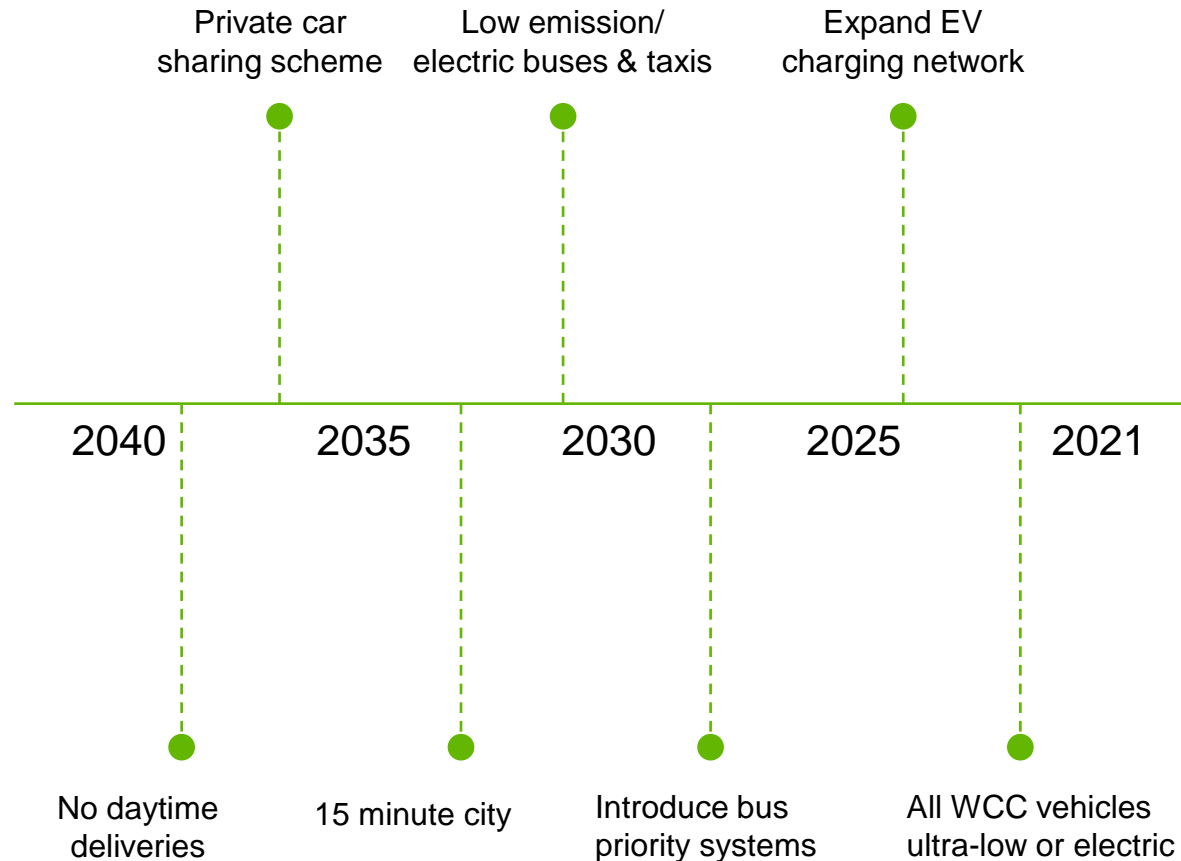
It will be necessary and useful to iterate between Step 3 and Step 4 to produce a robust Roadmap that includes all the relevant initiatives and also ensures that all pre-conditions are taken account of at every point along the roadmap.

This approach will also identify any gaps in the planned initiatives which are required to achieve the ‘target’ overshoots defined in the 2040 doughnut.

A theory of change approach is used to work backwards to understand which transport initiatives and pre-conditions are needed to achieve the 2040 vision

EXAMPLE

Example Vision for 2040: private car ownership at 70% of current levels, 50% of private cars are electric, 15 minute bus frequency on key routes, all electric and low emission bus fleet, no deliveries in towns or cities between 7am and 7pm. 80% of deliveries by electric or person powered vehicles



Theoretical example: Current situation - private car ownership at 1.3 cars per household, <1% of private cars are electric, average 30 minute bus frequency on key routes, limited restriction on freight deliveries, <1% of deliveries by electric or person powered vehicles

Note: these initiatives have been drawn from the reports reviewed but are used here in combination purely for illustrative purposes

Contents

- Introduction
- A Portrait of Winchester
- Doughnut Economics
- Review of selected Strategies & Plans
- Applying the Doughnut
- **Findings, Recommendations & Next Steps**

Findings (1)

The Doughnut provides a framework to integrate policies and strategies to address the climate emergency

- The holistic structure of the Doughnut facilitates a balance across environmental and social needs and demands

Doughnut Economics is being used in many regions and cities around the world aiming for a more hopeful future

- There are a growing number of cities and regions in the UK and internationally which are currently developing Doughnut strategies, providing opportunities to learn from one another
- The Doughnut Economics approach is fully open to all with no proprietary rights; support and guidance can be provided by the UK based Doughnut Economics Action Lab (DEAL)

A Doughnut methodology can be used to create a roadmap for action to guide systemic improvement

- The policies and strategies currently in place in Winchester can be integrated effectively into a Doughnut-based roadmap
- A city or regional roadmap should be guided by the specific local needs of that area
- Other cities are developing their own roadmaps along similar lines, appropriate to their locality, geography and history
- There are many ways of 'doing' Doughnut Economics – it must be appropriate and relevant for your place

It is important to identify a 'north star' of intent and purpose for the region or city

- This 'north star' can then be used to guide and align the development of diverse policies, strategies and plans
- It also provides a 'check back' during the implementation and operational phases

Findings (2)

Cooperation and co-creation are essential to take the community and all stakeholders into a better future together

- The Doughnut provides a serious yet playful model to structure policy and strategy making as well as engagement with partners, stakeholders and the public
- A Doughnut approach provides a democratic basis of co-creation with opportunities for different parts of the community to come together
- Experiences demonstrate the importance of working together with other authorities, organisations, charities, community groups, businesses, etc
- The Doughnut is not 'owned' by anyone – the approach needs to be collaborative and transparent
- 'Follow the energy': the need to spend time building relationships and trust was hugely emphasised by all cities
- All cities are highly aware of the lack of diversity and inclusiveness in their initiatives, and have made this a priority as they move forward.

Successful development of a Doughnut approach seems to come from a group of committed individuals working closely with and supported by local organisations and local government

- Creating a holistic approach cannot be done either only top down or bottom up – it needs a 'middle out' approach, integrating the passion and skills of the community
- Working with existing stakeholder groups and 'other issue' initiatives and programmes is key
- The benefit of aligning the local Doughnut to local challenges and values is recognised
- It is importance to identify appropriate funding sources: e.g. shared funding models – collaborative and not aligned with a single authority or agenda.

Recommendations (1)

Overall

- Use the concept of the Doughnut to bring the impact of the Climate & Biodiversity Emergency alive – for members, officers and the public - and use it as a core framework for Council decision making and communications

Communications

- Internal WCC presentation to senior leadership team and elected members to introduce the concept of Doughnut Economics and propose the development of a Winchester Doughnut
- Bilateral review of Doughnut approach with the new 10 year Green Economic Strategy to enable and facilitate linkages
- WCC to support a workshop(s) with other local authorities and organisations with a role or an interest in the area of Winchester District to introduce the concept of Doughnut Economics and the development of a Winchester Doughnut

Actions

- Create a simple check sheet that enables all WCC decisions to be reviewed against the Winchester Doughnut and to assess the absolute impact of the proposed action or inaction and also its relative materiality to the overall vision for Winchester District
- WCC workshop to define a detailed vision of what Winchester 2040 could look like – and what we want it to look like – based on all the relevant inputs – policies, strategies, surveys, consultations etc that have taken place
- Compile and agree a set of appropriate indicators for Winchester to measure each of the dimensions of the Winchester Doughnut – the social foundations and the planetary boundaries
- Create a dashboard for WCC to communicate the impact of all proposed and actual decisions on the dimensions of the Winchester Doughnut

Recommendations (2)

Development

- Develop the dashboard into an assessment tool to enable WCC to model the impact of all policies and initiatives for their overall impact on the local area
- Produce a Change Management Plan to support effective and compassionate change across Winchester District in line with the needs of the region and its people
- Support the establishment of a District Doughnut Citizens' Assembly – as a cross-community panel for the climate emergency and social emergency – to lead on the development of multi-lateral and inclusive Doughnut for Winchester District as a beacon of progress, fairness and hope across the south of England
- Define a holistic vision for Winchester District (beyond the Climate & Biodiversity Emergency and outside of party politics). Consider aligning this vision with the 7th generation principle (the Children's Fire) or the principles of the Well-Being of Future Generations Act (Wales)

Next steps

- Winchester City Council, Wessex Green Hub, Winchester Action on Climate Change and others working collaboratively to create a flourishing environment for all, based on the principles of the Doughnut, through:
 - Co-creating projects which moves us all towards zero-carbon
 - Convening and facilitating workshops and forums
 - Manifesting and following the energy
 - Using the power of place and connections to create and unlock
 - Telling stories to share good practice
 - Creating a strong network of individuals who can hold the space, weave the threads of this work and craft the stories to create *the more beautiful world our hearts know is possible**
- **Making Winchester a place in which everyone thrives**

Source: * Eisenstein, C. (2013)

References (1): general

- Cornwall Council. (2021) *Cornwall Decision-making Wheel* [Online]. [Accessed 4 August 2021]. Available from <https://www.cornwall.gov.uk/>
- Doughnut Economics Action Lab. (2020a) *The Amsterdam City Doughnut: A Tool for Transformative Action*. Amsterdam: DEAL.
- Doughnut Economics Action Lab. (2020b) *What is the Doughnut?* [Online]. [Accessed 15 June 2021]. Available from: <http://www.doughnuteconomics.org/>
- Eisenstein, C. (2013) *The more beautiful world our hearts know is possible*. Berkeley, CA: North Atlantic Books.
- Goodwin, K. (2019) *Designing the Doughnut: A Story of Five Cities*. [Online]. [Accessed 17 August 2021]. Available from <https://matchboxstudio.medium.com/>.
- Hopkins, R. (2019) *From What Is to What If*. London: Chelsea Green.
- Kotter, J. (2012) *The 8 step process for leading change* [Online]. [Accessed 1 August 2021]. Available from <https://www.kotterinc.com/8-steps-process-for-leading-change/>
- Kuebler-Ross, E. (2021) *Kuebler-Ross Change Curve* [Online]. [Accessed 1 September 2021] <https://www.ekrfoundation.org/5-stages-of-grief/change-curve/>
- Local Government Association. (2021) *Cornwall Council: Doughnut economics in council decision making* [Online]. [Accessed 4 August 2021]. Available from <https://www.local.gov.uk>
- Meadows, D. (2008) *Thinking in Systems*. White River Junction, VT: Chelsea Green.
- Oxfam Cymru. (2020) *The Welsh Doughnut - A framework for environmental sustainability and social justice*
- Prosci. (2002) *The Prosci ADKAR Method. A powerful yet simple method for facilitating individual change*. [Online]. Available from <https://www.prosci.com/methodology/adkar>
- Quaker Social Action. (2020) *Poverty in the UK*. [Online]. [Accessed 1 August 2021]. Available from <https://quakersocialaction.org.uk/>
- Raworth, K. (2017a) *Doughnut Economics*. London: Penguin Random House.
- Raworth, K. (2017b) *A Doughnut for the Anthropocene: Humanity's Compass in the 21st Century*. *The Lancet Planetary Health*, 1 (2) (2017).
- Reed, B. (2019) *Aligning around Purpose, Levels of Thought, and Transforming the World. Making Permaculture Stronger*. [Podcast]. [Accessed 3 July 2021]. Available from: <https://makingpermaculturestronger.net/e23/>.
- Regen Melbourne. (2021) *Towards a Regenerative Melbourne*. [Online]. [Accessed 10 August 2021]. Available from <https://www.regen.melbourne/>
- TCI (2020) *Creating City Portraits: a methodological guide from The Thriving Cities Initiative*. Oxford: Oxford University
- United Nations. (2015) *UN Sustainable Development Goals* [Online]. [Accessed 15 June 2021]. Available from: <https://www.un.org/sustainabledevelopment/>
- University of Exeter. (2020) *Towards a sustainable Cornwall: state of the doughnut* [Online]. [Accessed 5 August 2021]. Available from <https://www.exeter.ac.uk>

References (2): reports relating to Winchester District

Boyle + Summers. (2020) *Winchester Vision 2020-2030. Handbook part 3. Recommendations Report.*

Hampshire County Council (2020) *Climate Change Strategy 2020-2025* [Online]. [Accessed 10 Sep 2021] Available from <https://documents.hants.gov.uk/climate-change/Hampshire-Climate-Change-Strategy-2020-2025.pdf>

Urban Foresight. (2021) *Winchester District Ten-Year Green Economic Development Strategy*

Visit Winchester. (2018) *History & Heritage* [Online] [Accessed 09 Sept 2021]. Available from <https://www.visitwinchester.co.uk/things-to-do/history-heritage/>

Winchester City Council (2020a) *Winchester Climate Emergency. Carbon Neutrality Action Plan.*

Winchester City Council (2021a) *Biodiversity Action Plan.*

Winchester City Council (2021b) *Your Place Your Plan Local Plan. Strategic Issues and Priorities Consultation.*

Winchester City Council (2020b) *City of Winchester Movement Strategy.*

Winchester City Council (2020c) *Winchester Vision 2020-2030. Handbook Part 3. Recommendations Report.*

Winchester City Council (2020d) *Biodiversity Action Plan.* [Online]. [Accessed 10 Sept 2021] Available from <https://www.winchester.gov.uk/planning/landscape-countryside/biodiversity>

Will Adeney



will@greenwessex.org
mobile: 07771 850564
www.wessexgreenhub.org

Dr Savithri Bartlett



savithri.bartlett@
winchester.ac.uk
mobile: 07961 116038
www.wessexgreenhub.org

Dr Tammi Sinha



Tammi.Sinha@solent.ac.uk
mobile: 07802 366690
www.wessexgreenhub.org

Thank you